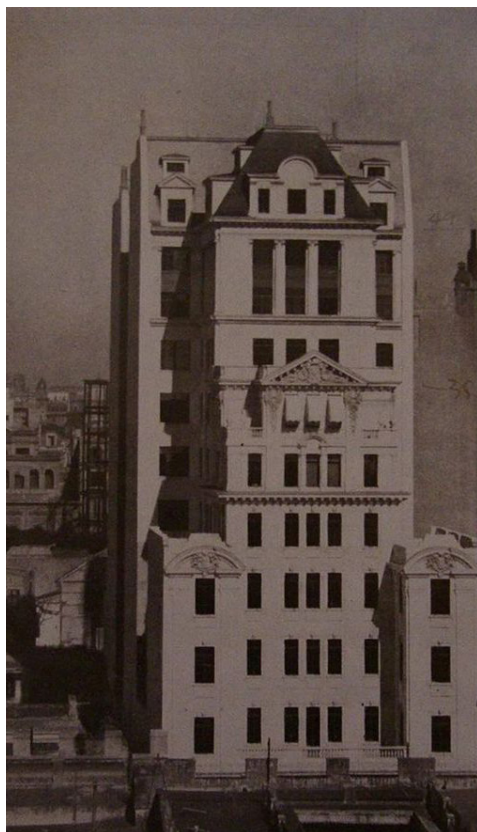


B2B ASSOCIATES

—— *Real estate management* ——

Our joint work consists in the identification and execution of activities to conceive, organize and manage the whole construction process of a work of architecture or a civil work, through the logical and temporal succession relations, ***making sure the customer is assured about the overall quality of the work,*** in line with the estimated time and expediting the activities for optimized efficiency.

All efforts are made so that resources are used based on market forecast and in full compliance with the law.





_ BUILDING NICETO VEGA 5924, BUENOS AIRES

_ LONDON

_ MUSEO DEL NOVECENTO, MILAN



Real estate management

To the Small holders and the big real estate investors, our team ensures the proper administration of the rental relationship through an attentive and personalized service, using the most modern information media, it can offer:

- Analysis of contractual current situation and consulting for optimization of real estate profitability;
- Drafting and computerized registration of residential and commercial leases, sales of private documents for resolutions and extensions;

- Issuing and sending bills or invoices, payment verification, control and demand of service charges, Istat updates;
- Relations with condominium administrators, any participation in meetings on behalf of the property and advice on condominium matters;
- Contacts with Professionals to manage the tax and legal aspects of lease relationships;

_ HOTEL TANGO MAYO, BUENOS AIRES

_ RITZ PLAZA, TAIWAN

_ SIRI HOUSE, BANGKOK





_ "HOUSE OF JOYCE & JEROEN", HOLLAND

_ CASA BATLLÒ, BARCELONA

_ REVIVAL OF THE CASINO OF MONTRÉAL

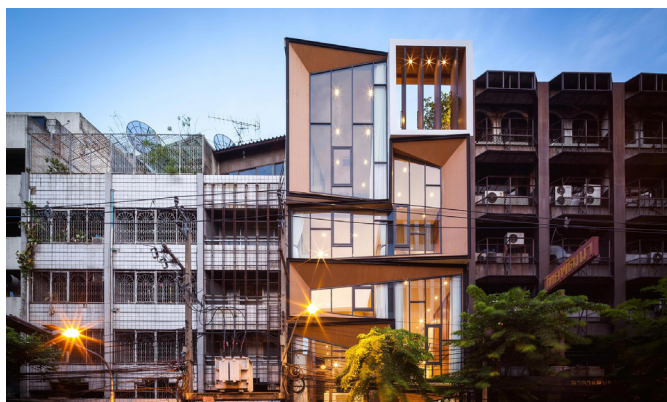


The staff works, in parallel, in the field of Advisory & Valuation following these processes:

- Restructuring and sale of real estate portfolios;
- Definition and implementation of valorization strategies of the portfolio even in temporary management;
- Strategic and management consulting services;
- Market analysis and feasibility studies;
- The highest and best use analysis;
- Property valuations of individual units, real estate sky-earth, real estate portfolios of all intended uses;
- Advisory and asset management, management of enhancement project;

The staff can handle also all the technical services below:

- Due diligence, for a complete identification of the real property;
- Building&Facility Management, Facility & Building Management;
- Property management, support and coordination services for the maintenance of the real estate value, lease, management, administration of property of any kind;
- Project Management, from urban planning to the completion of administrative and operational activities in real estate development projects;
- Construction Management, Construction Supervision and Management of Construction Site, even with continuous supervision of implementation activities;
- Purchase services and contract, carried out directly or in the name and on behalf of the principal, through transparent and structured processes;
- Feasibility studies to identify the best strategies for development in real estate transactions;



B2B ASSOCIATES

— Partners —



Veronica Bettini

ARCHITECT

"Volli, volli sempre, fortissimamente volli" (Alfieri)

Curriculum Vitae

veronica.bettini@b2bassociates.it



Massimo Guazzotti

ARCHITECT

"Imagination is more important than acknowledgement" (Einstein)

Curriculum Vitae

massimo.guazzotti@b2bassociates.it



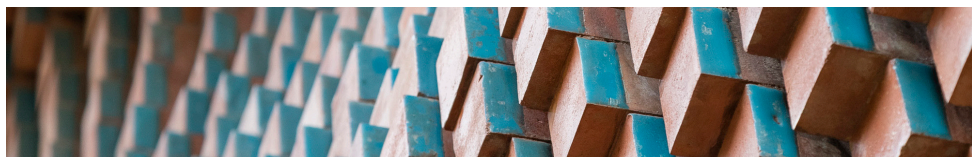
Francesca Torrieri

ARCHITECT

"Assessment for decision making"

Curriculum Vitae

francesca.torrieri@b2bassociates.it



Angelica Bettini

ENGINEER

"Niente è impossibile"

Curriculum Vitae

angelica.bettini@b2bassociates.it



Alessandro De Palma

ENGINEER

"Quidvis Recte Factum Quamvis Humile Praeclarum"

Curriculum Vitae

alessandro.depalma@b2bassociates.it



Ugo Utica

ENGINEER

"Sturm und drang" (M. Klinger)

Curriculum Vitae

ugo.utica@b2bassociates.it

