

# B2B ASSOCIATES

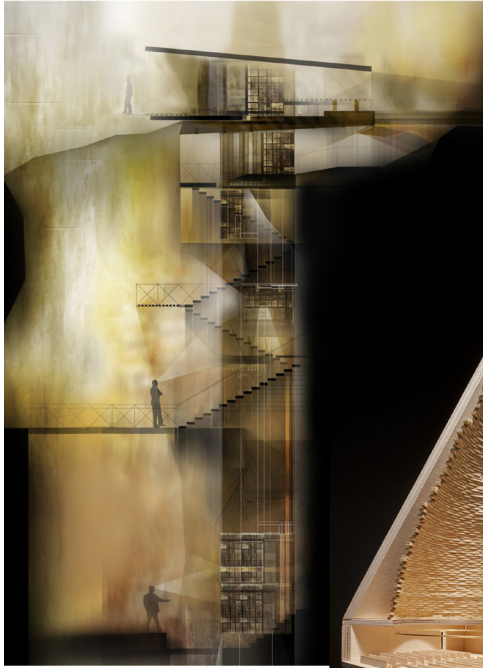
— *BIM* —

---

***Our joint work consists in the identification and execution of activities to conceive, organize and manage the whole construction process of a work of architecture or a civil work, through the logical and temporal succession relations, making sure the customer is assured about the overall quality of the work, in line with the estimated time and expediting the activities for optimized efficiency.***

***All efforts are made so that resources are used based on market forecast and in full compliance with the law.***

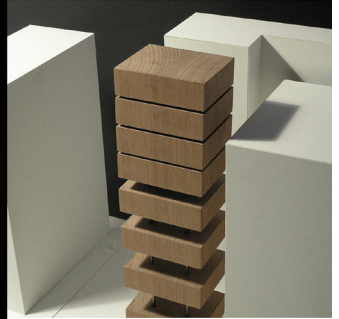




\_ USF SCHOOL OF ARCHITECTURE

\_ ROZ BARR ARCHITECTS - NEW CHURCH

\_ HA TOWER / FRONTOFFICE



## *BIM Methods, Models and Applications*

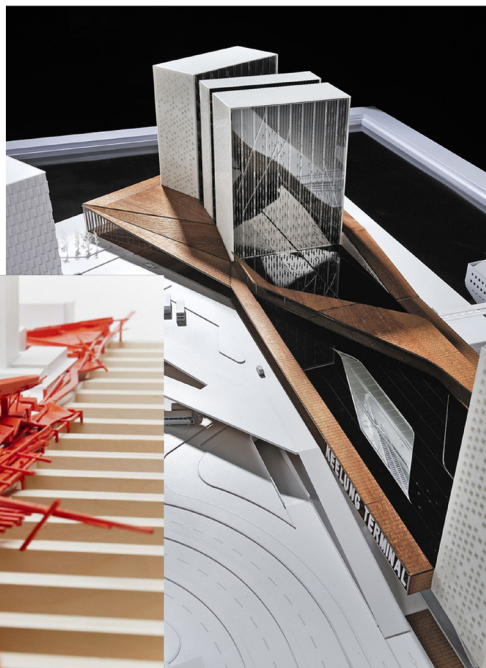
The BIM provides the theoretical principles and advanced operating models that characterize the dynamics of a project lifecycle: process for producing public works, work plan interventions to private clients and international contracts (see. Plan of work in 2013 - RIBA), where the project is intended as a method of production and the flow of information management in a complex reality that requires the adoption of operational instruments to enable the efficient recognition of its distinctive character in order to proper development of project documentation that is capable of supporting a communication code to interface with its entire life cycle, from preliminary design

document, the feasibility study, concept design and detail (definitive and executive), the choice of the contractor, the runtime and the relevant control actions, by suggesting also the peculiarities in the areas of building management and administration of its disposal, all in the light of the content of the national legislative framework, in close relation to the propositions of the organizational models of the project management, building information modeling and advanced operational tools (Allplan, ArchiCAD, Revit, MSPProject, Spring, Naviswork, Solibri, MasterFormat, Uniformat II, OmniClass, UNI for building).

\_ NEW ORLEANS NO. 1 - DRAWING ON GLASS

\_ PHOTO BY PAVLO KRYVOZUB

\_ ACD F ARCHITECTURE. MODEL 04



# B2B ASSOCIATES

— Partners —



**Veronica Bettini**

ARCHITECT

*"Vollì, vollì sempre, fortissimamente vollì" (Alfieri)*

Curriculum Vitae

[veronica.bettini@b2bassociates.it](mailto:veronica.bettini@b2bassociates.it)



**Massimo Guazzotti**

ARCHITECT

*"Imagination is more important than acknowledgement" (Einstein)*

Curriculum Vitae

[massimo.guazzotti@b2bassociates.it](mailto:massimo.guazzotti@b2bassociates.it)



**Francesca Torrieri**

ARCHITECT

*"Assessment for decision making"*

Curriculum Vitae

[francesca.torrieri@b2bassociates.it](mailto:francesca.torrieri@b2bassociates.it)



## **Angelica Bettini**

**ENGINEER**

*"Niente è impossibile"*

Curriculum Vitae

[angelica.bettini@b2bassociates.it](mailto:angelica.bettini@b2bassociates.it)



## **Alessandro De Palma**

**ENGINEER**

*"Quidvis Recte Factum Quamvis Humile Praeclarum"*

Curriculum Vitae

[alessandro.depalma@b2bassociates.it](mailto:alessandro.depalma@b2bassociates.it)



## **Ugo Utica**

**ENGINEER**

*"Sturm und drang" (M. Klingler)*

Curriculum Vitae

[ugo.utica@b2bassociates.it](mailto:ugo.utica@b2bassociates.it)

